

RECEIVED
LARAMIE COUNTY
CHEYENNE, WY.

CERTIFIED LAND CORNER RECORDATION

'89 JAN 20 PM 3 04

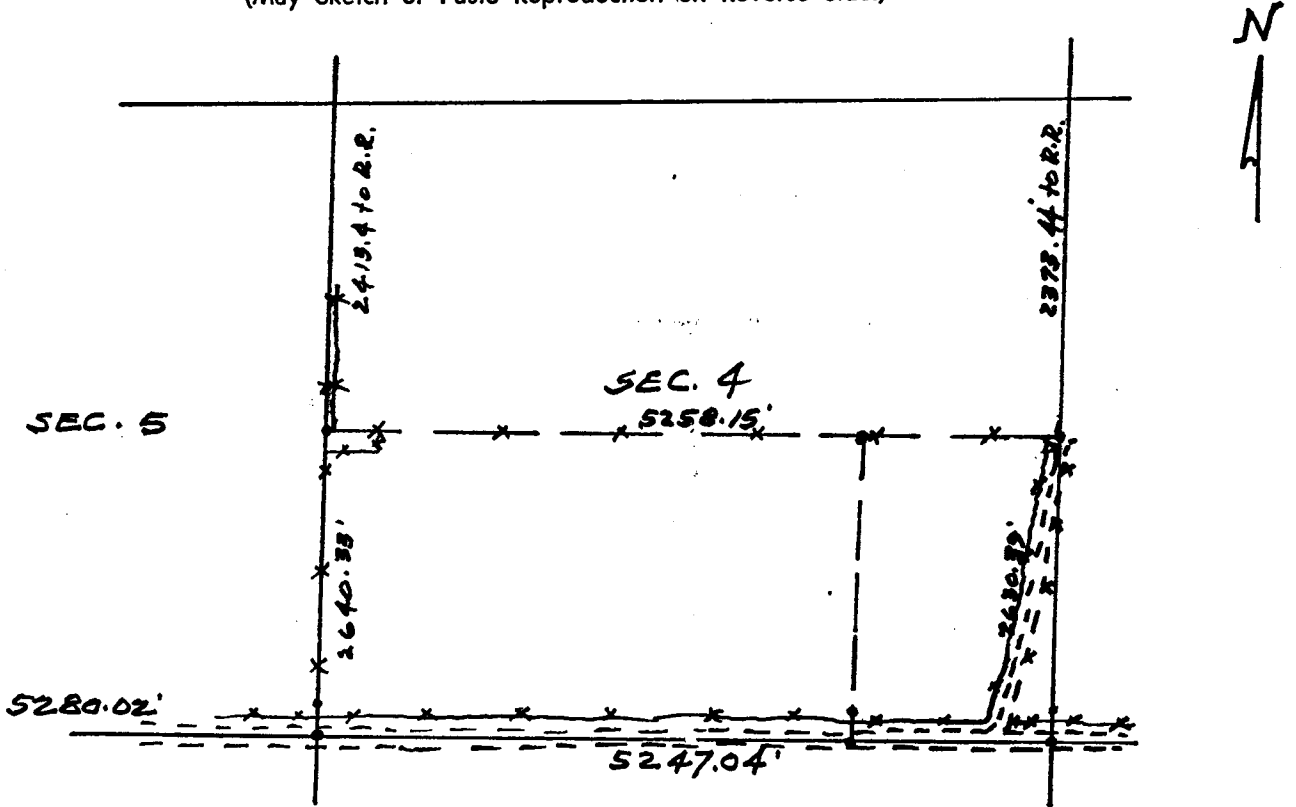
DESCRIPTION OF CORNER EVIDENCE FOUND, AND ORIGINAL RECORD (if known)

E 1/4 COR - REBAD & CAP
SEC. 4
T. 14 N., R. 64 W.

DESCRIPTION OF MONUMENT AND ACCESSORIES ESTABLISHED
TO PERPETUATE THE ORIGINAL LOCATION OF THIS CORNER:

SHOT DIST. WEST, SOUTH, NORTH

SKETCH, WITH COURSE AND DISTANCE TO ADJACENT CORNER IF DETERMINED IN THIS SURVEY.
(May Sketch or Paste Reproduction on Reverse Side.)



I, DONALD M HOPKINS certify that I have carefully performed or reviewed the work done on the diagrammed corner as reported on this recordation form and approve the same.

Donald M Hopkins
Signature of Surveyor

Registration No.

STATE OF WYOMING,
Office of Clerk and Recorder,
County of LARAMIE

This "corner record" was filed for record on the _____ day of _____, 19____, was noted on the cross-index plat and is assigned page No. _____, in book No. _____.

County Official			
Cross Index No. <u>C-13</u>	T. <u>14</u>	R. <u>64</u>	Mer.
_____	T. _____	R. _____	Mer.
_____	T. _____	R. _____	Mer.
_____	T. _____	R. _____	Mer.
_____	T. _____	R. _____	Mer.
_____	T. _____	R. _____	Mer.
_____	T. _____	R. _____	Mer.